

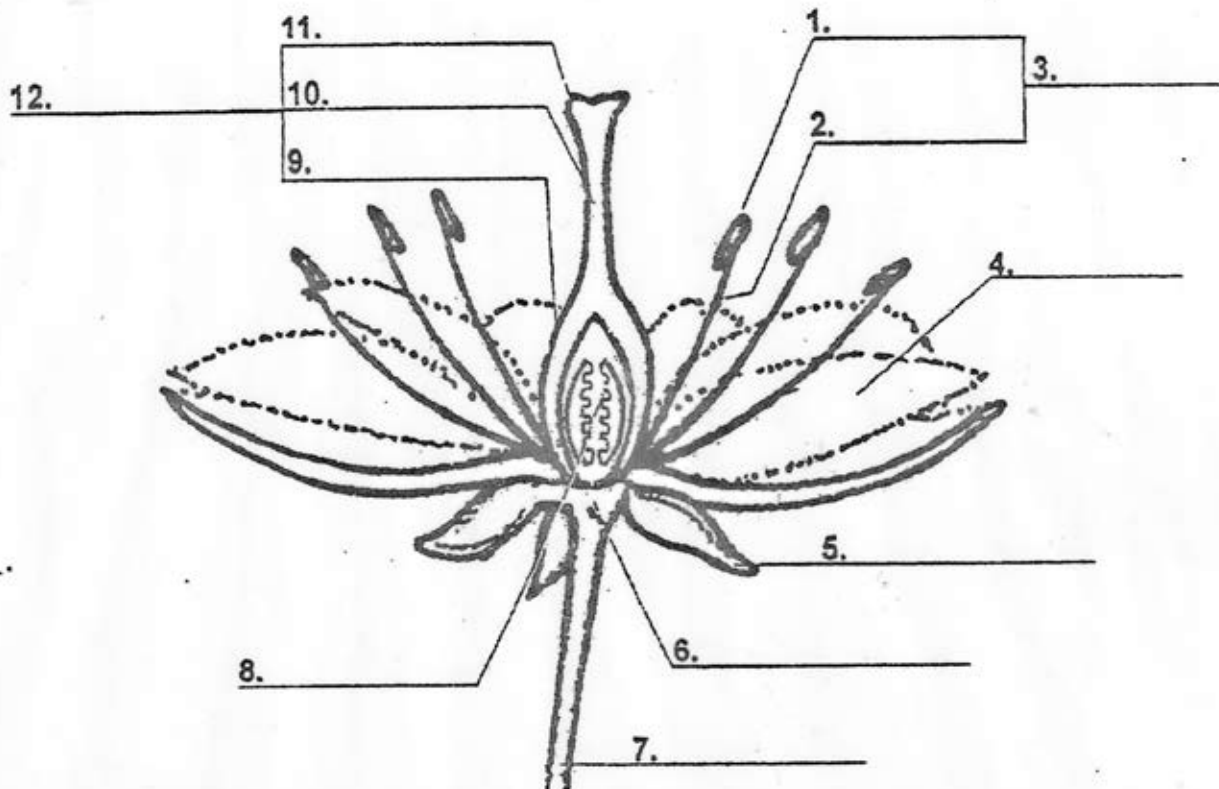
## FLOWER ANATOMY SHEET

Using the following words, label the structures (parts) of the flower.

stigma  
anther  
filament  
pedicel

petal  
style  
receptacle  
ovary

ovule  
pistil  
stamen  
sepal



Using the definitions below, label the structures of the flower with the letter matching their function.

- A. Specially colored to attract potential pollinators
- B. thick and waxy modified leaves which act as protection for the developing flower
- C. female organ of a flower
- D. sticky surface at the top of the pistil; it traps and holds pollen
- E. tube-like structure that holds up the stigma
- F. when fertilized becomes a seed
- G. when fertilized becomes the fruit
- H. the pollen-bearing part of the stamen
- I. the stalk that holds the anther
- J. male organ of a flower
- K. part of the stem from where flower organs grow
- L. the stalk bearing a flower